

System No. C-AJ-1318

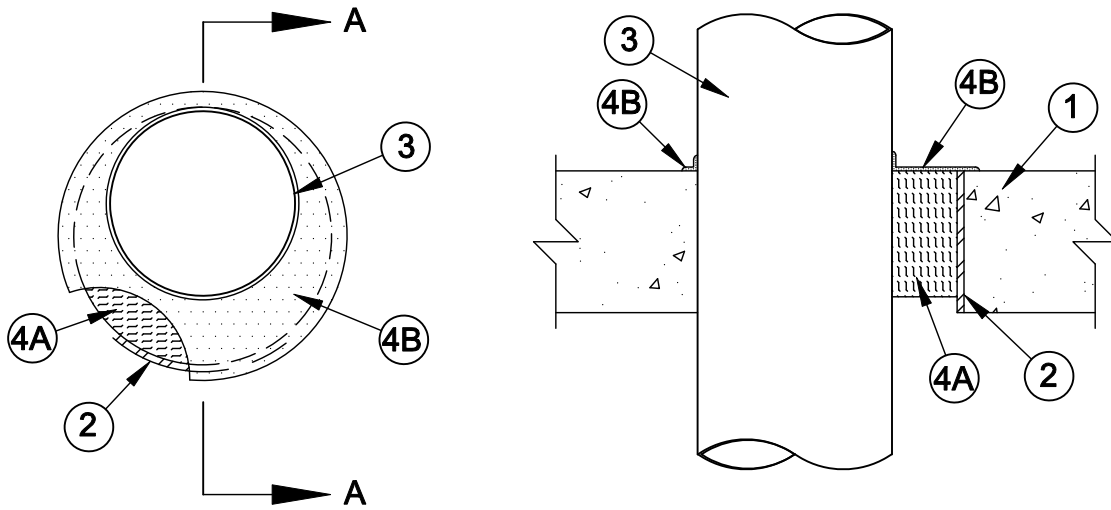


F Rating - 2 Hr

T Rating - 0 Hr

L Rating At Ambient - Less Than 1 CFM/sq ft

L Rating At 400 F - Less Than 1 CFM/sq ft



Section A-A

1. **Floor or Wall Assembly** - Min 4-1/2 in. thick reinforced lightweight or normal weight (100-150 pcf) concrete. Wall may also be constructed of any UL Classified **Concrete Blocks***. Max diam of opening is 14 in.
See **Concrete Blocks** (CAZT) category in the Fire Resistance Directory for names of manufacturers.
2. **Metallic Sleeve** - (Optional) - Nom 14 in. diam (or smaller) Schedule 10 (or heavier) steel pipe cast or grouted into floor or wall assembly, flush with floor or wall surfaces.
3. **Through Penetrants** - One metallic pipe, conduit or tubing to be installed either concentrically or eccentrically within the firestop system. The annular space between the pipe, conduit or tubing and the periphery of the opening shall be min 0 in. (point contact) to max 2 in. Pipe, conduit or tubing to be rigidly supported on both sides of floor or wall assembly. The following types and sizes of metallic pipes, conduits or tubing may be used:
 - A. **Steel Pipe** - Nom 12 in. diam (or smaller) Schedule 10 (or heavier) steel pipe.
 - B. **Iron Pipe** - Nom 12 in. diam (or smaller) cast or ductile iron pipe.
 - C. **Conduit** - Nom 6 in. diam (or smaller) rigid steel conduit, nom 4 in. diam (or smaller) electrical metallic tubing or nom 1 in. diam (or smaller) flexible steel conduit.
 - D. **Copper Tubing** - Nom 6 in. diam (or smaller) Type M (or heavier) copper tubing.
 - E. **Copper Pipe** - Nom 6 in. diam (or smaller) Regular (or heavier) copper pipe.
4. **Firestop System** - The firestop system shall consist of the following:
 - A. **Packing Material** - Min 4 in. thickness of 4 pcf mineral wool batt insulation compressed and firmly packed into opening as permanent form. Packing material to be flush with top surface of floor or both surfaces of wall.
 - B. **Fill, Void or Cavity Material* - Spray** - Min 1/8 in. wet thickness of fill material sprayed or brushed into annular space on top surface of floor or both surfaces of wall to completely cover mineral wool and to overlap a min of 1/2 in. onto penetrant and periphery of opening on top of floor or both surfaces of wall.

SPECIFIED TECHNOLOGIES INC - SpecSeal AS200 Elastomeric Spray

*Bearing the UL Classification Marking

FOR CANADIAN APPLICATIONS:

When evaluated in accordance with ULC-S115, this system has the following ratings:

System No.	Rating Hr.			
	F	FT	FH	FTH
C-AJ-1318	2	0	2	0

For more information, please see the XHHW7.R14288 section in the UL Fire Resistance Directory entitled Fill, Void or Cavity Materials Certified for Canada.



Specified Technologies Inc. 210 Evans Way Somerville, NJ 08876

Reproduced courtesy of Underwriters Laboratories, Inc.

Created or Revised: October 09, 2009

(800)992-1180 • (908)526-8000 • FAX (908)231-8415 • E-Mail:techserv@stifirestop.com • Website:www.stifirestop.com



C-AJ-1318
PAGE 1 OF 1