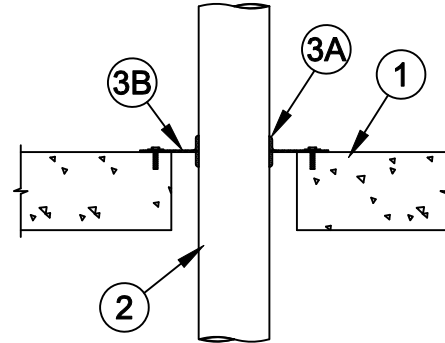
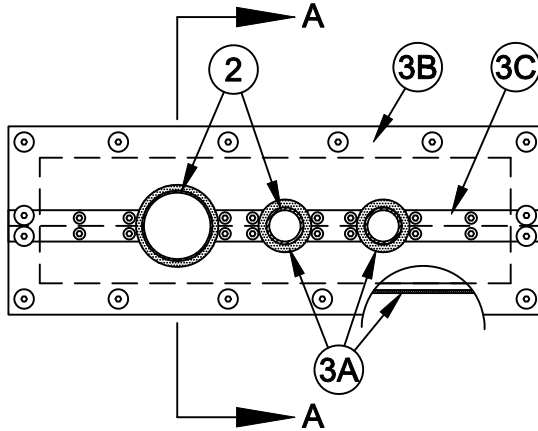




System No. C-AJ-1533

F Rating - 2 Hr

T Rating - 0 Hr



Section A-A

- Floor or Wall Assembly** - Min 4-1/2 in. (114 mm) thick lightweight or normal weight (100-150 pcf or 1600-2400 kg/m3) concrete. Wall may also be constructed of any UL Classified **Concrete Blocks***. Max area of opening 480 sq in. (0.31 m2) with max dimension of 30 in. (762 mm).

See **Concrete Blocks** (CAZT) category in the Fire Resistance Directory for names of manufacturers.

- Through Penetrants** - One or more metallic pipes, conduits or tubing installed within the through opening. The space between pipes, conduits or tubing shall be min 3 in. (76 mm). The space between pipes, conduits or tubing and periphery of opening shall be min 1 in. (25 mm). Pipe, conduit or tubing to be rigidly supported on both sides of floor or wall assembly. The following types and sizes of metallic pipes, conduits or tubing may be used:

- Steel Pipe** - Nom 12 in.(305 mm) diam (or smaller) Schedule 5 (or heavier) steel pipe.
- Iron Pipe** - Nom 12 in. (305 mm) diam (or smaller) cast or ductile iron pipe.
- Conduit** - Nom 6 in. (152 mm) diam (or smaller) rigid steel conduit, nom 4 in. (102 mm) diam (or smaller) electrical metallic tubing (EMT) or nom 1 in. (25 mm) diam (or smaller) flexible steel conduit.
- Copper Pipe or Tube** - Nom 6 in. (152 mm) diam (or smaller) Regular (or heavier) copper pipe or Type L (or heavier) copper tube.

- Firestop System** - The firestop system shall consist of the following:

- Fill, Void or Cavity Materials* - Putty or Sealant** - Min 3/16 in. (5 mm) thick by 2 in. (51 mm) wide band of putty or sealant required around penetrants on top surface of the floor or on both sides of wall assembly. Putty or sealant bands installed to project approx 1 in. (25 mm) beyond each face of the composite sheet (Item 3B) on top surface of floor or on both sides of wall assembly. Nom 3/16 in. (5 mm) cove bead of putty or sealant applied around base of pipe or conduit at its egress from the intumescent sheet on top surface of floor or on both sides of the wall. Nom 3/16 in. (5 mm) wide by 3/16 in. (5 mm) thick putty strips or nom 1/4 in. (6 mm) diam bead of sealant applied beneath composite sheet around entire perimeter of through opening.

SPECIFIED TECHNOLOGIES INC - SpecSeal Putty, SpecSeal Series SSS Sealant or SpecSeal LCI Sealant

FOR CANADIAN APPLICATIONS:

When evaluated in accordance with ULC-S115, this system has the following ratings:

System No.	Rating Hr.			
	F	FT	FH	FTH
C-AJ-1533	2	0	2	0

For more information, please see the XHHW7.R14288 section in the UL Fire Resistance Directory entitled Fill, Void or Cavity Materials Certified for Canada.



Specified Technologies Inc. 210 Evans Way Somerville, NJ 08876

Reproduced courtesy of Underwriters Laboratories, Inc.

Created or Revised: October 09, 2009

(800)992-1180 • (908)526-8000 • FAX (908)231-8415 • E-Mail:techserv@stifirestop.com • Website:www.stifirestop.com



C-AJ-1533
PAGE 1 OF 2

B. Fill, Void or Cavity Materials*- Composite Sheet - Foil-faced sheet with galv steel sheet backer. Sheets may be installed as one solid sheet, cut in two pieces or split on one side of the penetrant(s). Opening in intumescent sheet to be max 3/16 in. (5 mm) larger than outside diameter of through penetrants. Sheets cut to lap min of 2 in. (51 mm) beyond periphery on all sides of opening. Sheets to be installed on top surface of the floor or on both sides of wall with foil facing against floor or wall surface and secured with min 3/16 in. (5 mm) diam by 1-1/4 in. (32 mm) long steel concrete screws in conjunction with min 1-1/4 in. (32 mm) diam steel fender washers. Spacing of fasteners not to exceed 6 in. (152 mm) OC.

SPECIFIED TECHNOLOGIES INC - SpecSeal CS Composite Sheet

C. Steel Cover Strip - Min 2 in. (51 mm) wide strip of min 0.020 in. (0.51 mm) thick (26 gauge) galv steel centered over entire length of each butted seam or slit made in the intumescent sheet (Item 3A). Prior to installation of the steel strip, the seam or slit in the intumescent sheet shall be covered with a nom 1/8 by 1/2 in. (3.2 by 13 mm) ribbon of putty or a nom 1/4 in. (6 mm) diam bead of sealant (Item 3B). Steel cover strip secured to galv steel sheet backer of intumescent sheet with steel sheet metal screws or rivets spaced max 3 in. (76 mm) OC on each side of seam or slit.

*Bearing the UL Classification Mark

FOR CANADIAN APPLICATIONS:
When evaluated in accordance with ULC-S115, this system has the following ratings:

System No.	Rating Hr.			
	F	FT	FH	FTH
C-AJ-1533	2	0	2	0

For more information, please see the XHHW7.R14288 section in the UL Fire Resistance Directory entitled Fill, Void or Cavity Materials Certified for Canada.



Specified Technologies Inc. 210 Evans Way Somerville, NJ 08876

Reproduced courtesy of Underwriters Laboratories, Inc.

Created or Revised: October 09, 2009

(800)992-1180 • (908)526-8000 • FAX (908)231-8415 • E-Mail:techserv@stifirestop.com • Website:www.stifirestop.com



C-AJ-1533
PAGE 2 OF 2