

STI/PV 120-01

Through Penetration
 SpecSeal SSC Collar
 SpecSeal RED2 WrapStrip
 SpecSeal LCI
 SpecSeal SSP Putty
 CAN/ULC S115-05 at 50Pa (0.20" of Water)
 See Chart for Ratings

Pipe Diam. (In.) ¹	Wrap Strip Size Thick x Width [Number of layers] (In.) ¹	Diam. of Opening (In.) ¹	Number of Fasteners	Penetrating Item Material (Sch 40) ²	Rating (min)		
					F	FT	FTH
1-1/2	SpecSeal SSC 150 1/4 x 1-1/2 [2 layers]	2	2	PVC, ccPVC, RCN	120	120	120
				ABS, ccABS	120	120	0
				XFR 15/50	120	80	0
2	SpecSeal SSC 200 1/4 x 1-1/2 [2 layers]	2.5	2	PVC, ccPVC, RCN	120	120	120
				ABS, ccABS	120	120	0
				XFR 15/50	120	80	0
3	SpecSeal SSC 300 3/8 x 1-1/2 [3 layers]	4	3	ABS, ccABS	120	65	120 (FH only)
				XFR 15/50, PVC, ccPVC, RCN	120	0	0
4	SpecSeal SSC 400 1/2 x 1-1/2 [4 layers]	5	3	CPVC, PVC, ccPVC, RCN	120	120	120
				ABS, ccABS	120	89	120 (FH only)
				XFR 15/50	120	77	0

¹ Convert inches to millimeters by multiplying by 25.4.

² XFR 15/50 PVC, Proprietary Extra Fire Resistant Polyvinyl Chloride, CPVC-Chlorinated Polyvinyl Chloride, PVC-Polyvinyl Chloride, ccPVC Cellular Core Polyvinyl Chloride, RNC Rigid Non-metallic Conduit (Made of PVC SCH 40 or thinner), ABS-Acrylonitrile Butadiene Styrene, ccABS-Cellular Core Acrylonitrile Butadiene Styrene

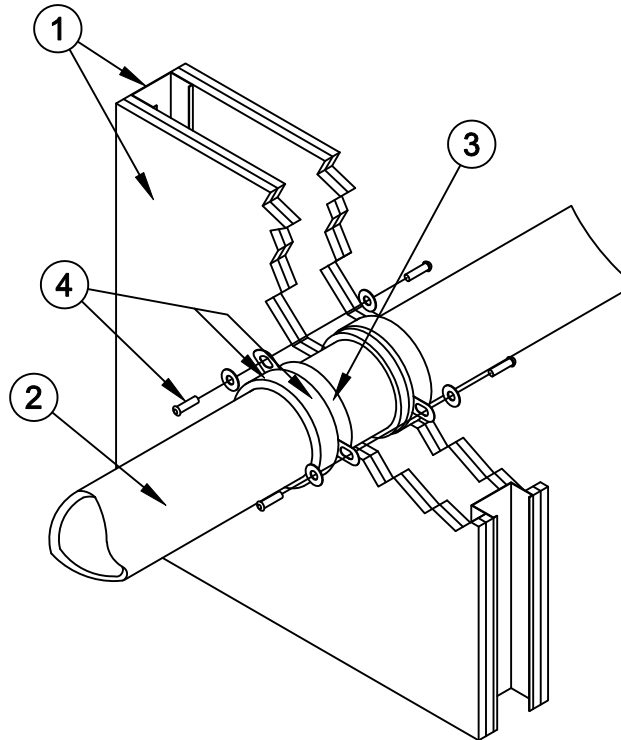


Fig. 1: SpecSeal SSC Assembly



Specified Technologies Inc. 210 Evans Way Somerville, NJ 08876

Reproduced courtesy of Intertek Testing Services NA Ltd.

Created or Revised: February 24, 2010

(800)992-1180 • (908)526-8000 • FAX (908)231-8415 • E-Mail:techserv@stifirestop.com • Website:www.stifirestop.com

STI/PV 120-01
PAGE 1 OF 3

1. **GYPSUM WALL ASSEMBLY** - Use 2-hour fire rated wall assembly consisting of Minimum 25 GA galvanized steel studs spaced maximum 24 inches (61mm) on center measuring 3-1/2-inch wide with 1-1/4 inch (32mm) legs. Attach studs with minimum #6 x 3/8-inch (10mm) steel stud framing screws to channel shaped floor and ceiling tracks measuring 1/2-inch (13mm) deep by 3-1/2-inch (89mm) wide. Secure tracks to floor and ceiling with 1-inch (25mm) concrete fasteners spaced maximum 18 inches (457mm) on center. Secure floor and ceiling runners with minimum 3-inch (76mm) concrete fasteners spaced maximum 18-inches (457mm) on center. Cover studs and runners with two layers of 5/8-inch (16mm) thick, Type X gypsum wallboard on each face. Fasten the base layer gypsum wallboard to steel studs with minimum #6 1-1/4 inch (32mm) bugle head phillips fine thread drywall screws spaced maximum 12 inches (305mm) on center. Fasten face layer of gypsum wallboard to steel studs with minimum #6 1-7/8 inch (48mm) bugle head phillips fine thread drywall screws spaced maximum 8 inches (203mm) on center. Joint Tape and Compound - vinyl or casein, dry or premixed joint compound applied to face layers of gypsum wallboard in two coats to all exposed screw heads and gypsum wallboard joints. A minimum 2-inch (51mm) wide paper, plastic or fiberglass tape embedded in first layer of compound over joints in gypsum wallboard. Create a round throughopening with a diameter corresponding to the Penetrating Item (Item 2) diameter as listed in the Chart.

2. **PENETRATING ITEM** - Refer to the Chart for Penetrating Item type and size. Concentrically position in the opening made in the Wall Assembly (Item 1) a Schedule 40 pipe for use in vented or closed piping system. Establish an annular space between the Penetrating Item (Item 2) the edge of the opening in the Wall Assembly (Item 1) according to the Chart.

3. **CERTIFIED MANUFACTURER: SPECIFIED TECHNOLOGIES INC.**
CERTIFIED PRODUCT: Sealant
MODEL: SpecSeal® SSP Putty or SpecSeal® Series LCI Intumescent Sealant
FILL, VOID OR CAVITY MATERIAL - Apply a minimum 5/8-inch (16mm) depth of sealant fill material in the annular space between the Wall Assembly (Item 1) and the Penetrating Item (Item 2) flush with both Faces of the Wall Assembly (Item1).

4. **CERTIFIED MANUFACTURER: Specified Technologies Inc.**
CERTIFIED PRODUCT: Prefabricated intumescent collar
MODEL: SpecSeal SSC Collar (see Chart for applications)
COLLAR - Install around the Penetrating Item (Item 2) in accordance with the accompanying installation instructions. Device incorporates anchor tabs for attachment to the wall surfaces of the Gypsum Wall Assembly (Item 1). Secure collar to wall surfaces with minimum 1/4-inch by minimum 2-3/4-inch (70 mm) long steel hollow wall anchors in conjunction with minimum 1 inch (25 mm) diameter steel fender washers. The number of fasteners is dependent upon the nominal diameter of the Penetrating Item (Item 2). Refer to chart for applicable number of fasteners.

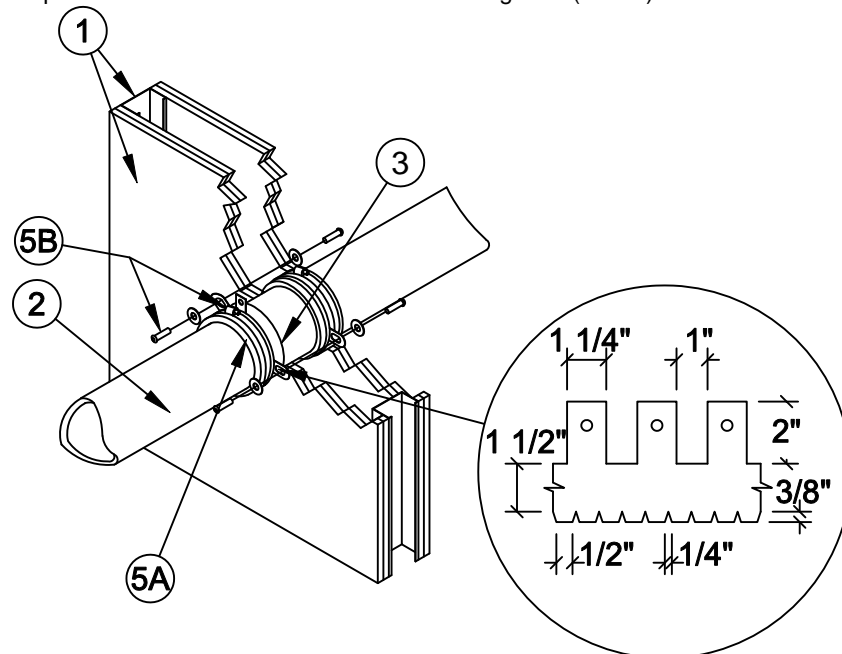


Fig. 2: Optional Steel Collar and SpecSeal RED2 Wrap Strip with hose clamp.



Specified Technologies Inc. 210 Evans Way Somerville, NJ 08876

Reproduced courtesy of Intertek Testing Services NA Ltd.

Created or Revised: February 24, 2010

(800)992-1180 • (908)526-8000 • FAX (908)231-8415 • E-Mail:techserv@stifirestop.com • Website:www.stifirestop.com

STI/PV 120-01
PAGE 2 OF 3

5. **FIELD ADAPTED COLLAR AND WRAP ASSEMBLY** - Use the following as an alternative to Collar (Item 4)
- A. **CERTIFIED MANUFACTURER:** Specified Technologies Inc.
CERTIFIED PRODUCT: Intumescent Wrap Strip
MODEL: SpecSeal RED2 Wrap Strip (see Chart for applications)
WRAP STRIP - As an alternate to Collar (Item 4) and in conjunction with Restraining Collar (Item 5B), nominal 1/8-inch (3mm) thick by 1-1/2-inch (38mm) wide SpecSeal RED2 Wrapstrips faced on both sides with a plastic film. Strips tightly wrapped around nonmetallic pipe with edges butted against the underside of the floor. The wrap strips may be installed with butted seams in successive layers aligned or offset or continuously wrapped around the Penetrating Item (Item 2). Temporarily hold Wrap Strip layers in place with tape. See Chart for minimum number of layers required per nominal pipe size.
- B. **STEEL COLLAR** - As an alternate to Collar (Item 4) and in conjunction with Wrap Strip (Item 5A) use a nominal 1-1/2-inch (38mm) deep collar with 1-inch (25mm) wide by 2-inch (51mm) long anchor tabs for attachment to Gypsum Wall Assembly (Item 1) and minimum 1/4-inch (6mm) wide retaining tabs located opposite the anchor tabs. Steel collar, with anchor tabs bent outward 90 degrees, wrapped tightly around wrap strip layers with minimum 1-inch (25mm) overlap at seam. Retainer tabs to be bent 90 degrees toward pipe to lock wrap strips in position. Anchor tabs to be pressed tightly against the wall surface(s). Collar to be secured in place with one 1/2-inch (13mm) wide by 0.028-inch (0.7mm) thick stainless steel hose clamp. As an alternate to the hose clamps, collar secured together by means of three No. 8 by 1/4-inch (6 mm) long steel screws. Collar to be secured to wall surfaces with minimum 1/4-inch (6mm) by minimum 2-3/4-inch (70 mm) long steel hollow wall anchors in conjunction with minimum 1-inch (25 mm) diameter steel fender washers. The number of fasteners is dependent upon the nominal diameter of the Penetrating Item (Item 2). Refer to chart for applicable number of fasteners.



Specified Technologies Inc. 210 Evans Way Somerville, NJ 08876

Reproduced courtesy of Intertek Testing Services NA Ltd.

Created or Revised: February 24, 2010

(800)992-1180 • (908)526-8000 • FAX (908)231-8415 • E-Mail:techserv@stifiirestop.com • Website:www.stifiirestop.com

STI/PV 120-01
PAGE 3 OF 3