

## STI/PV 120-02

Through Penetration  
 SpecSeal SSC Collar  
 SpecSeal RED2 WrapStrip  
 SpecSeal LCI  
 SpecSeal SSP Putty  
 CAN/ULC S115-05 at 50Pa (0.20" of Water)  
 See Chart for Ratings

Pipe Diam. (In.) <sup>1</sup>	Diam. of Opening (In.) <sup>1</sup>	SSC Collar or Required # of Layers or Thickness (In.) <sup>1</sup>	Fasteners Required	Penetrating Item (Sch 40) <sup>2</sup>	Rating (min)			
					F	FT	FH	FTH
1.5	2	SSC 150 or 1/4 x 1-1/2 [2 layers]	2	PVC, ccPVC, RCN	120	120	120	120
				XFR 15-50, PVC, CPVC, ABS, ccABS	120	15	120	15
2	2.5	SSC 200 or 1/4 x 1-1/2 [2 layers]	2	PVC, ccPVC, RCN	120	120	120	120
				XFR 15-50, PVC, CPVC, ABS, ccABS	120	15	120	15
3	4	SSC 300 or 3/8 x 1-1/2 [3 layers]	3	XFR 15-50, PVC, PVC, ccPVC, RNC ABS, ccABS	120	120	120	120
4	5	SSC 400 or 1/2 x 1-1/2 [4 layers]	3	XFR 15-50, PVC, CPVC, ccPVC, RNC ABS, ccABS	120	120	120	120

<sup>1</sup> Convert inches to millimeters by multiplying by 25.4.

<sup>2</sup> XFR 15/50 PVC, Proprietary Extra Fire Resistant Polyvinyl Chloride, CPVC-Chlorinated Polyvinyl Chloride, PVC Polyvinyl Chloride, ccPVC Cellular Core Polyvinyl Chloride, RNC Rigid Non-metallic Conduit (Made of PVC SCH 40 or thinner), ABS-Acrylonitrile Butadiene Styrene, ccABS-Cellular Core Acrylonitrile Butadiene Styrene

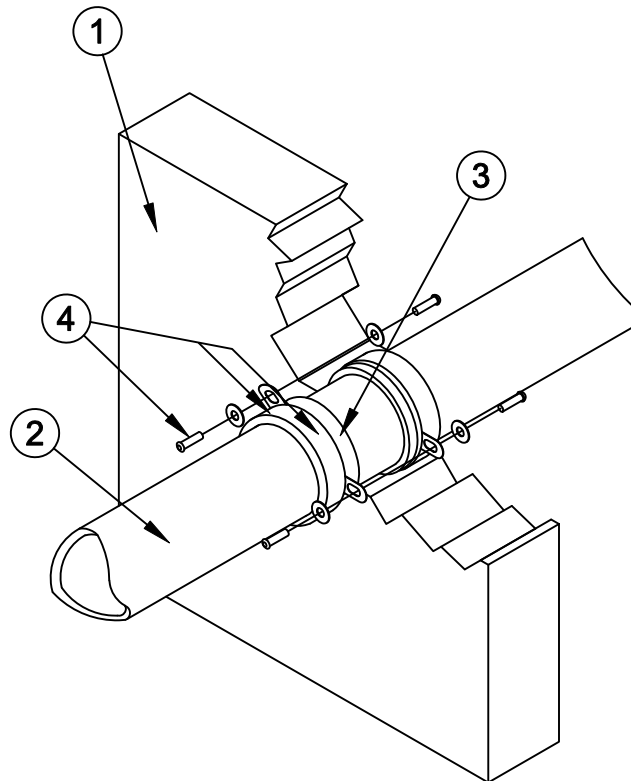


Fig. 1: SpecSeal SSC Assembly



**Specified Technologies Inc. 210 Evans Way Somerville, NJ 08876**

Reproduced courtesy of Intertek Testing Services NA Ltd.

Created or Revised: January 15, 2010

(800)992-1180 • (908)526-8000 • FAX (908)231-8415 • E-Mail:techserv@stifirestop.com • Website:www.stifirestop.com

STI/PV 120-02  
PAGE 1 OF 3

1. **WALL ASSEMBLY** - Use a two-hour fire-rated wall assembly consisting of minimum 4-1/2-inch (114mm) thick normal weight (100-150 pcf [1600- 2400kg/m3]) reinforced concrete or similarly rated masonry units. Create a round through-opening with a diameter corresponding to the Penetrating Item (Item 2) diameter as listed in the Chart.
2. **PENETRATING ITEM** - Refer to the Chart for Penetrating Item type and size. Centrally position in the opening made in the Wall Assembly (Item 1) a Schedule 40 pipe for use in vented or closed piping system. Establish an annular space between the Penetrating Item (Item 2) the edge of the opening in the Wall Assembly (Item 1) according to the Chart.
3. **CERTIFIED MANUFACTURER: SPECIFIED TECHNOLOGIES INC.**  
**CERTIFIED PRODUCT: Sealant**  
**MODEL: SpecSeal® SSP Putty or SpecSeal® Series LCI Intumescent Sealant**  
**FILL, VOID OR CAVITY MATERIAL** - (Optional) Apply a minimum 5/8-inch (16mm) depth of sealant fill material in the annular space between the Wall Assembly (Item 1) and the Penetrating Item (Item 2) flush with both Faces of the Wall Assembly (Item1).
4. **CERTIFIED MANUFACTURER: Specified Technologies Inc.**  
**CERTIFIED PRODUCT: Prefabricated intumescent collar**  
**MODEL: SpecSeal SSC Collar (see Chart for applications)**  
**COLLAR** - Install around the Penetrating Item (Item 2) in accordance with the accompanying installation instructions. Device incorporates anchor tabs for attachment to the wall surfaces of the Wall Assembly (Item 1). Secure Collar using minimum 1/4-inch (6mm) diameter by 1-1/4-inch (32mm) long concrete anchors in conjunction with minimum 1-inch (26mm) diameter steel fender washers. As an alternate to the steel concrete anchors, nominal 1-1/4-inch (32mm) long steel powder actuated fasteners provided with 3/4-inch (19mm) diameter steel washers may be used to secure anchor tabs. Refer to chart for applicable number of fasteners.

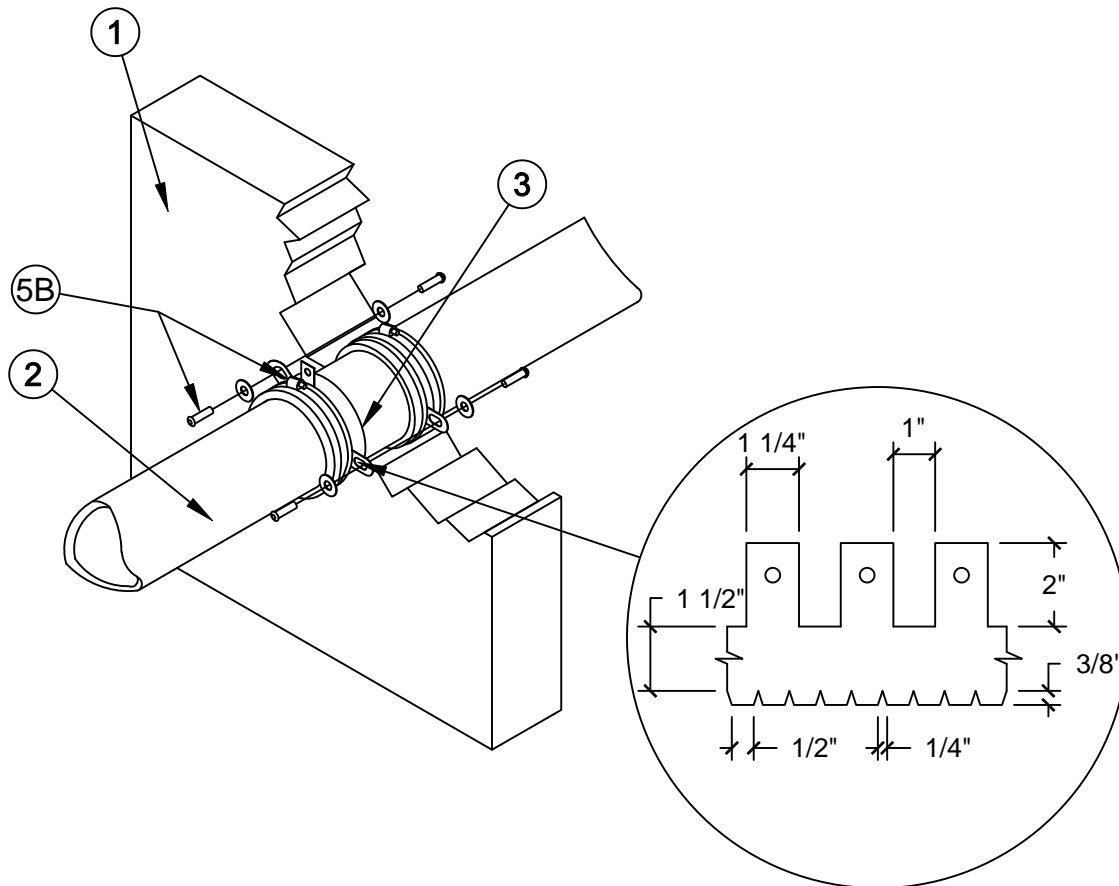


Fig. 2: Optional Steel Collar and SpecSeal RED2 Wrap Strip with hose clamp.



**Specified Technologies Inc. 210 Evans Way Somerville, NJ 08876**

Reproduced courtesy of Intertek Testing Services NA Ltd.

Created or Revised: January 15, 2010

(800)992-1180 • (908)526-8000 • FAX (908)231-8415 • E-Mail:techserv@stifirestop.com • Website:www.stifirestop.com

STI/PV 120-02  
PAGE 2 OF 3

5. **FIELD ADAPTED COLLAR AND WRAP ASSEMBLY** - Use the following as an alternative to Collar (Item 4)
- A. **CERTIFIED MANUFACTURER:** Specified Technologies Inc.  
**CERTIFIED PRODUCT:** Intumescent Wrap Strip  
**MODEL:** SpecSeal RED2 Wrap Strip (see Chart for applications)  
**WRAP STRIP** - As an alternate to Collar (Item 4) and in conjunction with Restraining Collar (Item 5B), nominal 1/8-inch (3mm) thick by 1-1/2-inch (38mm) wide SpecSeal RED2 Wrapstrips faced on both sides with a plastic film. Strips tightly wrapped around nonmetallic pipe with edges butted against the underside of the floor. The wrap strips may be installed with butted seams in successive layers aligned or offset or continuously wrapped around the Penetrating Item (Item 2). Temporarily hold Wrap Strip layers in place with tape. See Chart for minimum number of layers required per nominal pipe size.
- B. **STEEL COLLAR** - As an alternate to Collar (Item 4) and in conjunction with Wrap Strip (Item 5A) use a nominal 1-1/2-inch (38mm) deep collar with 1-inch (25mm) wide by 2-inch (51mm) long anchor tabs for attachment to Gypsum Wall Assembly (Item 1) and minimum 1/4-inch (6mm) wide retaining tabs located opposite the anchor tabs. Steel collar, with anchor tabs bent outward 90 degrees, wrapped tightly around wrap strip layers with minimum 1- inch (25mm) overlap at seam. Retainer tabs to be bent 90 degrees toward pipe to lock wrap strips in position. Anchor tabs to be pressed tightly against the wall surface(s). Collar to be secured in place with one 1/2-inch (13mm) wide by 0.028-inch (0.7mm) thick stainless steel hose clamp. As an alternate to the hose clamps, collar secured together by means of three No. 8 by 1/4-inch (6 mm) long steel screws. Secure Collar using minimum 1/4- inch (6mm) diameter by 1-1/4-inch (32mm) long concrete anchors in conjunction with minimum 1-inch (26mm) diameter steel fender washers. As an alternate to the steel concrete anchors, nominal 1- 1/4-inch (32mm) long steel powder actuated fasteners provided with 3/4-inch (19mm) diameter steel washers may be used to secure anchor tabs. Refer to chart for applicable number of fasteners.



**Specified Technologies Inc. 210 Evans Way Somerville, NJ 08876**

Reproduced courtesy of Intertek Testing Services NA Ltd.  
Created or Revised: January 15, 2010

(800)992-1180 • (908)526-8000 • FAX (908)231-8415 • E-Mail:techserv@stifirestop.com • Website:www.stifirestop.com

STI/PV 120-02  
PAGE 3 OF 3