

Design No. STI/PH 120-03

THROUGH PENETRATION

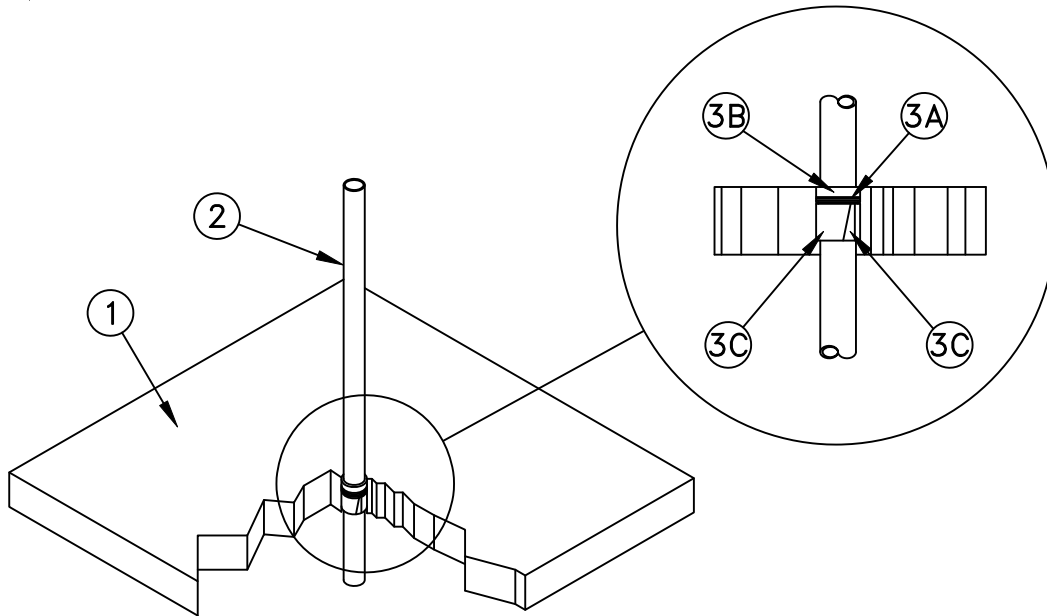
Specified Technologies Inc.

SpecSeal® SSW RED2 Wrap Strip

SpecSeal LCI Intumescent Sealant or SpecSeal SSP Firestop Putty

CAN/ULC S115-05 at 50Pa

FTH-Rating - 120 Minutes



- FLOOR/CEILING ASSEMBLY** - Use a two-hour fire-rated floor/ceiling assembly consisting of minimum 114 mm (4-1/2 inch) thick normal weight (1600-2400kg/m³ [100-150 pcf]) reinforced concrete. Create a through opening with a dia. corresponding to the pipe dia.
- PENETRATING ITEM** - Concentrically position a trade size 76 mm (3-inch) Sch 40 cellular core ABS Pipe in the opening made in the Floor/Ceiling Assembly (Item 1) for use in vented piping system. Establish an annular space between the Penetrating Item and the edge of the opening in the Floor/Ceiling Assembly (Item 1) to be 25.4 mm (1-inch).
- FILL, VOID OR CAVITY MATERIAL** - Apply the following materials to the annular space between the Floor/ceiling assembly (Item 1) and the Penetrating Item (Item 2):
 - Backer Rod** - Install 25.4 mm (1-inch) diameter polyethylene backer rod nominally 12.7mm (1/2- inch) from the top of the Floor/Ceiling Assembly (Item 1) cut to fit around Penetrating Item (Item 2) and to fill annular space.
 - CERTIFIED MANUFACTURER:** Specified Technologies Inc. **CERTIFIED PRODUCT:** Sealant **MODEL:** SpecSeal LCI Intumescent Sealant or SpecSeal SSP Firestop Putty **Sealant** - Apply a minimum 12.7 mm (1/2-inch) depth of sealant in order to fill the 12.7 mm (1/2-inch) void above the Backer Rod (Item 3A) and in the annular space between the Floor/Ceiling Assembly (Item 1) and the Penetrating Item (Item 2).
 - CERTIFIED MANUFACTURER:** Specified Technologies Inc. **CERTIFIED PRODUCT:** Wrap Strip **MODEL:** SpecSeal® SSW RED2 Wrap Strip **Wrap Strip** - Continuously wrap around the outer circumference of the Penetrating Item (Item 2) a minimum of three layers (minimum 3/8-inch total thickness) of the wrap strip. Use an aluminum foil faced tape to hold the wrap strip around the Penetrating Item (Item 2). Slide wrap strip into the annular space making sure that there is a compression fit of the wrap strip when installed into the annular space. Recess the bottom edge of the wrap strip 38 mm (1-1/2 inches) from the bottom of the Floor/Ceiling Assembly (Item 1).



Specified Technologies Inc. 210 Evans Way Somerville, NJ 08876

Reproduced courtesy of Intertek Testing Services NA Ltd.

Created or Revised: October 21, 2009

(800)992-1180 • (908)526-8000 • FAX (908)231-8415 • E-Mail:techserv@stifirestop.com • Website:www.stifirestop.com

STI/PH 120-03
PAGE 1 OF 1