

## STI/PH 120-04

Through Penetration  
SpecSeal SSC Collar  
SpecSeal RED2 WrapStrip  
SpecSeal LCI  
SpecSeal SSP Putty  
CAN/ULC S115-05 at 50Pa (0.20" of Water)  
See Chart for Ratings

Pipe Diam (In.) <sup>1</sup>	Diam of Opening (In.) <sup>1</sup>	SSC Collar or Required # of Layers or Thickness (in.) <sup>1</sup>	Fasteners Required	Sealant	Penetrating Item (Sch 40) <sup>2</sup>	Rating (min)			
						F	FT	FH	FTH
1.5	2	SSC 150 or 1/4 x 1-1/2 (2 Layers)	2	Required	PVC, ccPVC, RNC	120	120	120	120
				Optional	XFR 15-50 PVC, CPVC, ABS, ccABS	120	15	120	15
2	2.5	SSC 200 or 1/4 x 1-1/2 (2 Layers)	2	Required	PVC, ccPVC, RNC	120	120	120	120
				Optional	XFR 15-50 PVC, CPVC, ABS, ccABS	120	15	120	15
3	4	SSC 300 or 3/8 x 1-1/2 (3 Layers)	3	Required	XFR 15-50 PVC, PVC, ccPVC, RNC, ABS, ccABS	120	120	120	120
4	5	SSC 300 or 1/2 x 1-1/2 (4 Layers)	3	Optional	XFR 15-50 PVC, CPVC, ccPVC, RNC, ABS, ccABS	120	120	120	120

<sup>1</sup> Convert inches to millimeters multiply by 25.4.

<sup>2</sup> XFR 15/50 PVC, Proprietary Extra Fire Resistant Polyvinyl Chloride, CPVC-Chlorinated Polyvinyl Chloride, PVC Polyvinyl Chloride, ccPVC Cellular Core Polyvinyl Chloride, RNC Rigid Non-metallic Conduit (Made of PVC Sch 40 or thinner), ABS-Acrylonitrile Butadiene Styrene, ccABS-Cellular Core Acrylonitrile Butadiene Styrene



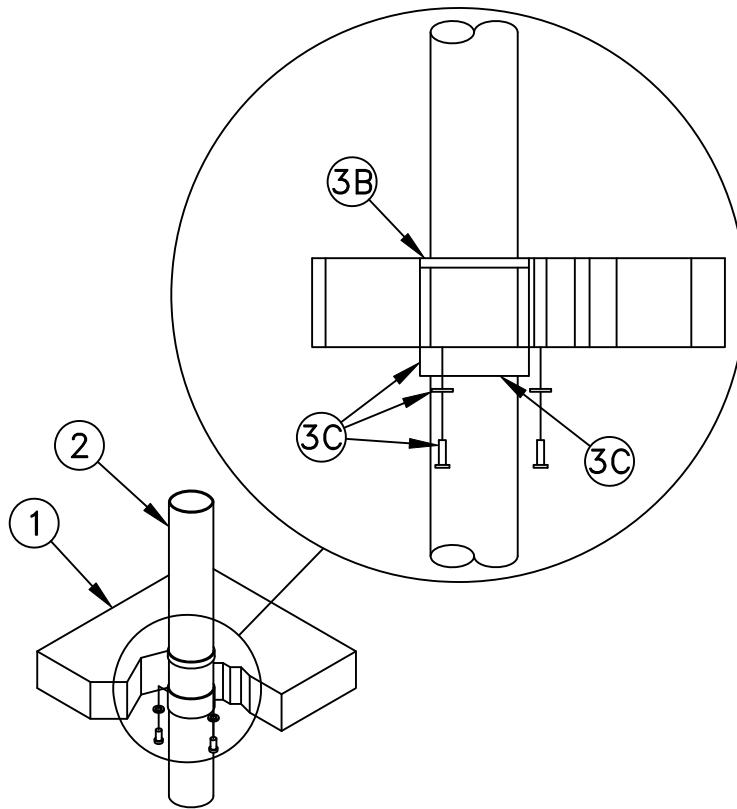
**Specified Technologies Inc. 210 Evans Way Somerville, NJ 08876**

Reproduced courtesy of Intertek Testing Services NA Ltd.

Created or Revised: October 27, 2009

(800)992-1180 • (908)526-8000 • FAX (908)231-8415 • E-Mail:techserv@stifirestop.com • Website:www.stifirestop.com

STI/PH 120-04  
PAGE 1 OF 3



1. **FLOOR/CEILING ASSEMBLY** - Use a two-hour fire-rated floor/ceiling assembly consisting of minimum 4-1/2 inch (114 mm) thick normal weight (100 - 150 pcf) reinforced concrete. Create a round through-opening with diameter in accordance with the chart.
2. **PENETRATING ITEM** - See Chart for Penetrating Item Type and Size. All Pipe wall thicknesses are Sch 40 and are intended for use in vented or closed systems. Concentrically position in the opening made in the Floor/Ceiling Assembly (Item 1) the desired pipe. Establish an annular space between the Penetrating Item (Item 2) and the edge of the opening in the Floor/Ceiling Assembly (Item 1) so as to center the Penetrating Item (Item 2) in the opening in the Floor/Ceiling Assembly (Item 1) .
3. **FILL, VOID OR CAVITY MATERIAL** - Apply the following materials to the annular space between the Floor/ceiling Assembly (Item 1) and the Penetrating Item (Item 2)
  - A. Forming Material (Optional not shown) - Install polyethylene backer rod, mineral wool batt insulation or glass fiber insulation friction fit into opening as a permanent form to facilitate installation of Sealant (Item 3B).
  - B. CERTIFIED MANUFACTURER: Specified Technologies Inc. CERTIFIED PRODUCT: Sealant MODEL: SpecSeal SSP Putty or SpecSeal LCI Apply a minimum 1/2 inch (13mm) depth of sealant fill material in the annular space between the Floor/Ceiling Assembly (Item 1) and the Penetrating Item (Item 2) to the annular space flush with the top of the Floor/Ceiling Assembly (Item 1) when required by the chart to achieve desired ratings.
  - C. CERTIFIED MANUFACTURER: Specified Technologies Inc. CERTIFIED PRODUCT: Prefabricated intumescent collar MODEL: SpecSeal SSC Collar (see Chart for applications) Collar - Install around the Penetrating Item (item 2) in accordance with the accompanying installation instructions. Device incorporates anchor tabs for attachment to the bottom surface of the Floor/Ceiling Assembly by means of 1/4 inch (6mm) diameter by 1-1/4 inch (32mm) long concrete anchors in conjunction with min 1 inch (26mm) diameter steel fender washers. As an alternate to the steel concrete anchors, nominal 1- 1/4 inch (32mm) long steel powder actuated fasteners provided with 3/4 inch (19mm) diameter steel washers may be used to secure anchor tabs.



**Specified Technologies Inc. 210 Evans Way Somerville, NJ 08876**

Reproduced courtesy of Intertek Testing Services NA Ltd.

Created or Revised: October 27, 2009

(800)992-1180 • (908)526-8000 • FAX (908)231-8415 • E-Mail:techserv@stifirestop.com • Website:www.stifirestop.com

STI/PH 120-04  
PAGE 2 OF 3

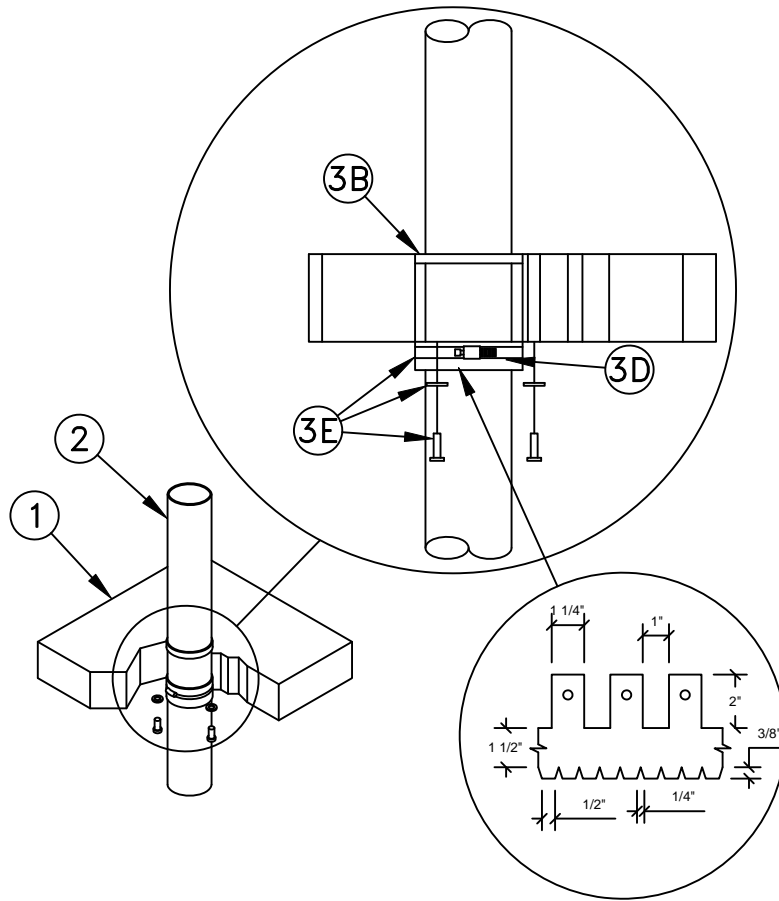


Fig. 2: Optional Steel Collar and SpecSeal RED2 Wrap Strip with hose clamp.

- D. **CERTIFIED MANUFACTURER:** Specified Technologies Inc. **CERTIFIED PRODUCT:** Intumescent Wrap Strip  
**MODEL:** SpecSeal RED2 Wrap Strip (see Chart for applications) WrapStrip - As an alternate to Collar (Item 3B) and in conjunction with Restraining Collar (Item 3E), nominal 1/8 inch (3.2mm) by 1-1/2 inch (38 mm) wide SpecSeal RED2 Wrapstrips faced on both sides with a plastic film. Strips tightly wrapped around nonmetallic pipe with edges butted against the underside of the floor. The wrap strips may be installed with butted seams in successive layers aligned or offset or continuously wrapped around the Penetrating Item (Item 2). Temporarily hold Wrap Strip layers in place with tape. See Chart for minimum number of layers required per nominal pipe size.
- E. **Steel Collar** - As an alternate to Collar (Item 3C) and in conjunction with Wrap Strip (Item 3D) use a nominal 1-1/2 inch (38mm) deep collar with 1 inch (25mm) wide by 2 inch (51mm) long anchor tabs for attachment to concrete and minimum 1/2 inch (6mm) wide retaining tabs located opposite the anchor tabs. Steel collar, with anchor tabs bent outward 90 degrees, wrapped tightly around wrap strip layers with minimum 1 inch (25mm) overlap at seam. Retainer tabs to be bent 90 degrees toward pipe to lock wrap strips in position. Anchor tabs to be pressed tightly against floor or wall surface(s). Collar to be secured in place with one 1/2 inch (13mm) wide by 0.028 inch (0.7mm) thick stainless steel hose clamp. As an alternate to the hose clamps, collar secured together by means of three No. 8 by 1/4 in. (6 mm) long steel screws. Collar to be secured to floor or wall surface(s) with 1/4 in. (6 mm) dia. by min 1-1/4 in. (32 mm) long steel concrete anchors in conjunction with min 1 in. (25 mm) dia. steel fender washers. As an alternate to the steel concrete anchors, nominal 1-1/4 in. (32 mm) long steel powder actuated fasteners provided with 3/4 in. (19 mm) dia. steel washers may be used to secure anchor tabs. The number of fasteners is dependent upon the nominal diameter of the Penetrating Item (Item 2) . Refer to chart for applicable number of fasteners.